

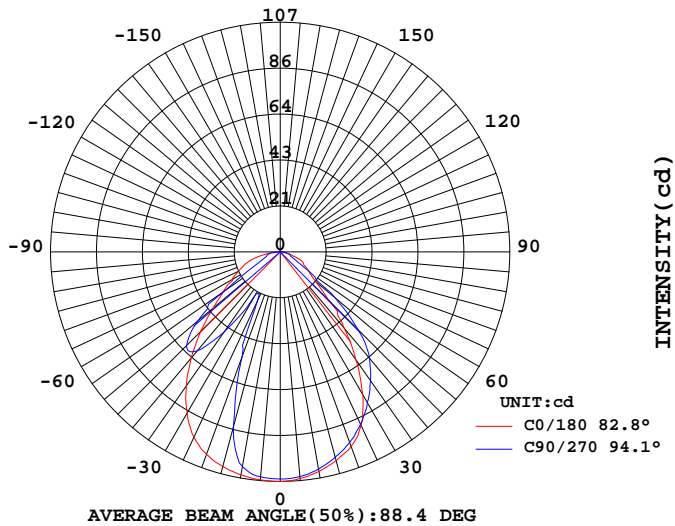
## LUMINAIRE PHOTOMETRIC TEST REPORT

Report number:

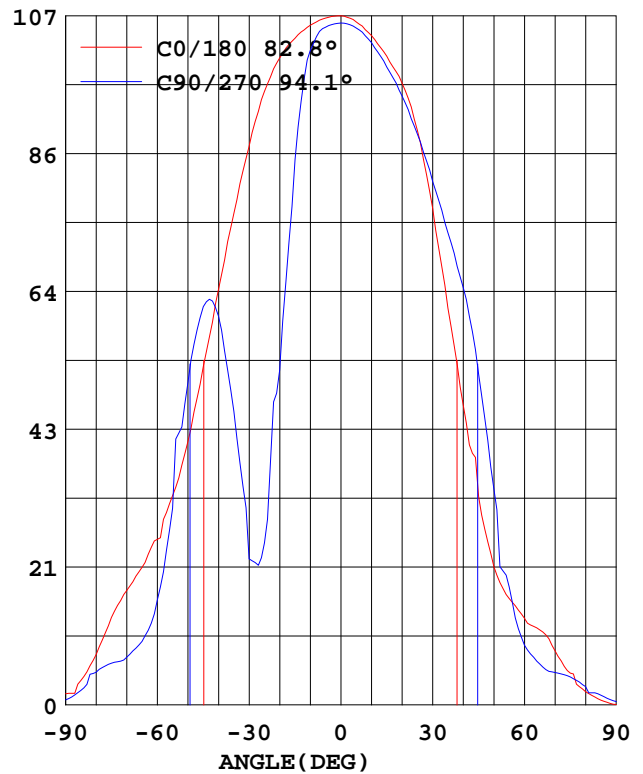
MANUFACTURER:					
Address:					
NAME:			TYPE:		WEIGHT:
SPECIFICATION:	CCT(K): 0		DIMENSION:		SERIAL No.:

DATA OF LAMP		Imax(cd)	107.0	S/MH(C0/180)	1.20
MODEL		EFFICIENCY(%)	100.0	S/MH(C90/270)	0.61
NOMINAL POWER(W)	3	TOTAL FLUX(lm)	196.5	Voltage(V)	12.05
RATED VOLTAGE(V)	12	EFFICIENCY(lm/W)	66.8	Current(A)	0.293
NOMINAL FLUX(lm)	196.5	$\eta$ up(%)	1.1	Power(W)	2.940
LAMPS QUANTITY	1	$\eta$ down(%)	98.9	Power Factor(PF)	0.827
TEST VOLTAGE(V)	12.1	Effective Flux(lm)	132.2	EEI	0.177

LUMINOUS INTENSITY DISTRIBUTION



LUMINOUS INTENSITY DISTRIBUTION



Test System:HOP00 HP880D  
Temperature:25.3DEG  
Operators:  
Test Date:07-14-2023

Test Set: 10.0deg/s C-Gamma (TYPE C)  
Humidity:65.0%  
Test Distance:1.000 m  
Remarks:

Color Temperature Data List

Report number:

MANUFACTURER:			
Address:			
NAME:		TYPE:	WEIGHT:
SPECIFICATION:	CCT(K): 0	DIMENSION:	SERIAL No.:

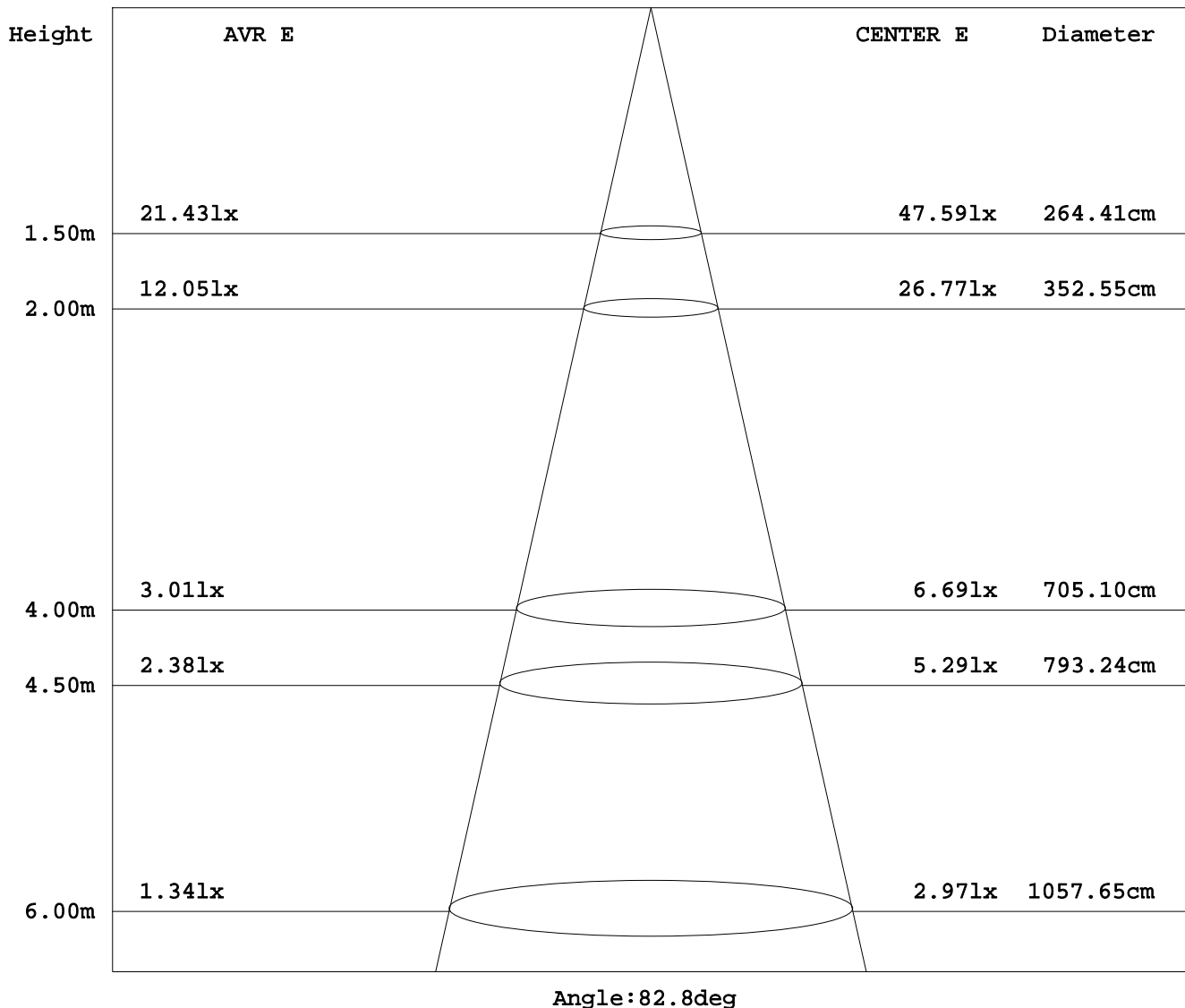
Test System:HOP00 HP880D  
Temperature:25.3DEG  
Operators:  
Test Date:07-14-2023

Test Set: 10.0deg/s C-Gamma (TYPE C)  
Humidity:65.0%  
Test Distance:1.000 m  
Remarks:

## AVERAGE AND CENTER E Figure

Report number:

MANUFACTURER:			
Address:			
NAME:		TYPE:	WEIGHT:
SPECIFICATION:	CCT(K): 0	DIMENSION:	SERIAL No.:



Test System: HOPOO HP880D  
Temperature: 25.3DEG  
Operators:  
Test Date: 07-14-2023

Test Set: 10.0deg/s C-Gamma (TYPE C)  
Humidity: 65.0%  
Test Distance: 1.000 m  
Remarks:

# HONGPU GONIOPHOTOMETERS SYSTEM TEST REPORT

## ZONAL FLUX DIAGRAM

Report number:

MANUFACTURER:			
Address:			
NAME:		TYPE:	WEIGHT:
SPECIFICATION:	CCT(K): 0	DIMENSION:	SERIAL No.:

γ	C0	C90	C180	C270					γ	zone	total
5.0	106.7	105.2	106.1	105.1					0- 5	2.538	2.538
10.0	105.5	101.6	103.9	102.8					5- 10	7.493	10.03
15.0	103.5	84.69	100.8	99.10					10- 15	11.92	21.96
20.0	100.5	52.00	96.56	94.57					15- 20	15.06	37.02
25.0	95.31	25.17	89.27	88.72					20- 25	16.91	53.93
30.0	86.76	22.68	77.12	81.29					25- 30	17.85	71.79
35.0	76.38	45.58	61.65	73.37					30- 35	19.44	91.24
40.0	64.57	60.37	46.53	64.80					35- 40	20.61	111.8
45.0	52.58	61.88	32.33	51.36					40- 45	20.33	132.1
50.0	40.95	50.09	21.50	33.59					45- 50	17.39	149.5
55.0	32.51	30.55	16.51	18.30					50- 55	13.19	162.7
60.0	25.72	16.33	13.46	9.285					55- 60	9.220	172.0
65.0	21.37	9.856	11.64	6.353					60- 65	6.837	178.8
70.0	17.80	7.431	8.405	5.041					65- 70	5.568	184.4
75.0	13.59	6.474	4.931	4.346					70- 75	4.418	188.8
80.0	7.837	5.084	2.058	2.846					75- 80	3.150	191.9
85.0	3.789	2.251	0.743	1.509					80- 85	1.733	193.7
90.0	1.729	0.771	0.052	0.521					85- 90	0.687	194.3
95.0	0.582	0.058	0.066	0.285					90- 95	0.255	194.6
100.0	0.381	0.065	0.101	0.271					95-100	0.117	194.7
105.0	0.329	0.077	0.141	0.270					100-105	0.109	194.8
110.0	0.286	0.099	0.181	0.283					105-110	0.108	194.9
115.0	0.269	0.141	0.231	0.296					110-115	0.112	195.0
120.0	0.279	0.206	0.280	0.330					115-120	0.123	195.2
125.0	0.290	0.294	0.340	0.384					120-125	0.139	195.3
130.0	0.307	0.391	0.405	0.444					125-130	0.155	195.5
135.0	0.366	0.458	0.465	0.475					130-135	0.168	195.6
140.0	0.449	0.502	0.507	0.447					135-140	0.171	195.8
145.0	0.511	0.508	0.521	0.371					140-145	0.160	196.0
150.0	0.533	0.478	0.508	0.288					145-150	0.138	196.1
155.0	0.509	0.443	0.468	0.250					150-155	0.110	196.2
160.0	0.458	0.397	0.415	0.289					155-160	0.085	196.3
165.0	0.399	0.341	0.358	0.330					160-165	0.062	196.4
170.0	0.337	0.297	0.314	0.323					165-170	0.040	196.4
175.0	0.297	0.284	0.294	0.284					170-175	0.022	196.4
180.0	0.293	0.276	0.293	0.276					175-180	0.007	196.4
DEG	LUMINOUS INTENSITY:cd									UNIT:lm	

Test System:HOPPO HP880D  
 Temperature:25.3DEG  
 Operators:  
 Test Date:07-14-2023

Test Set: 10.0deg/s C-Gamma (TYPE C)  
 Humidity:65.0%  
 Test Distance:1.000 m  
 Remarks:

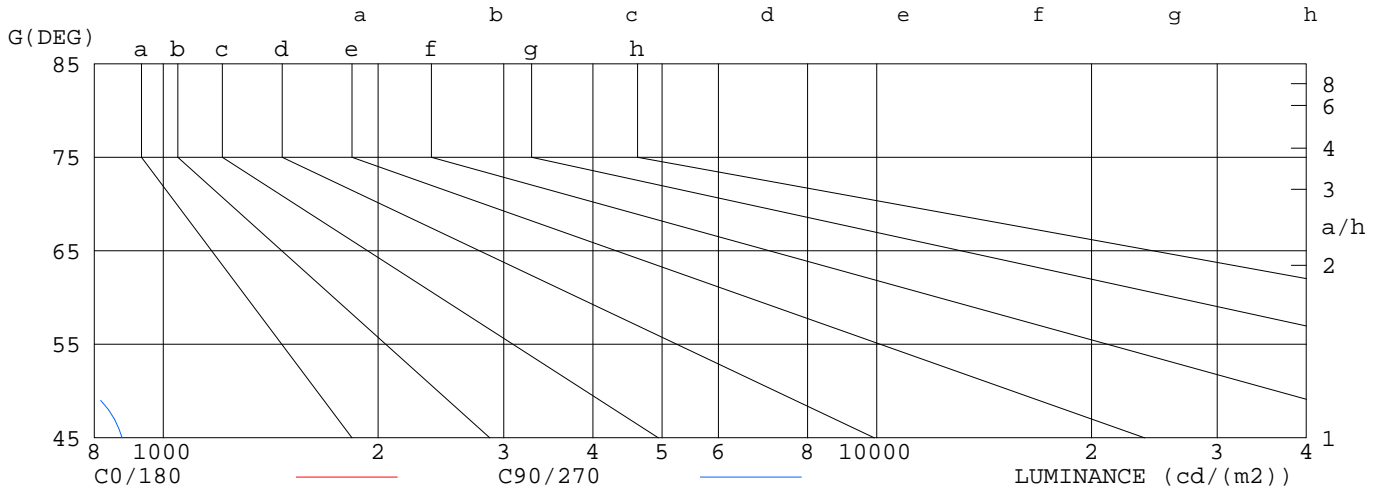
## LUMINANCE LIMITATION CURVES

Report number:

MANUFACTURER:			
Address:			
NAME:		TYPE:	WEIGHT:
SPECIFICATION:	CCT(K): 0	DIMENSION:	SERIAL No.:

## LUMINANCE LIMITATION CURVES

GLARE	CLASS	ILLUMINANCE (lx)							
1.15	A	2000	1000	500	<=300				
1.50	B		2000	1000	500	<=300			
1.85	C			2000	1000	500	<=300		
2.20	D				2000	1000	500	<=300	
2.55	E					2000	1000	500	<=300



LUMINANCE $\text{cd}/\text{m}^2$		
G (DEG)	C0/180	C90/270
85	435	258
80	451	293
75	525	250
70	521	217
65	506	233
60	515	327
55	567	533
50	637	779
45	744	875

Test System:HOPPO HP880D  
 Temperature:25.3DEG  
 Operators:  
 Test Date:07-14-2023

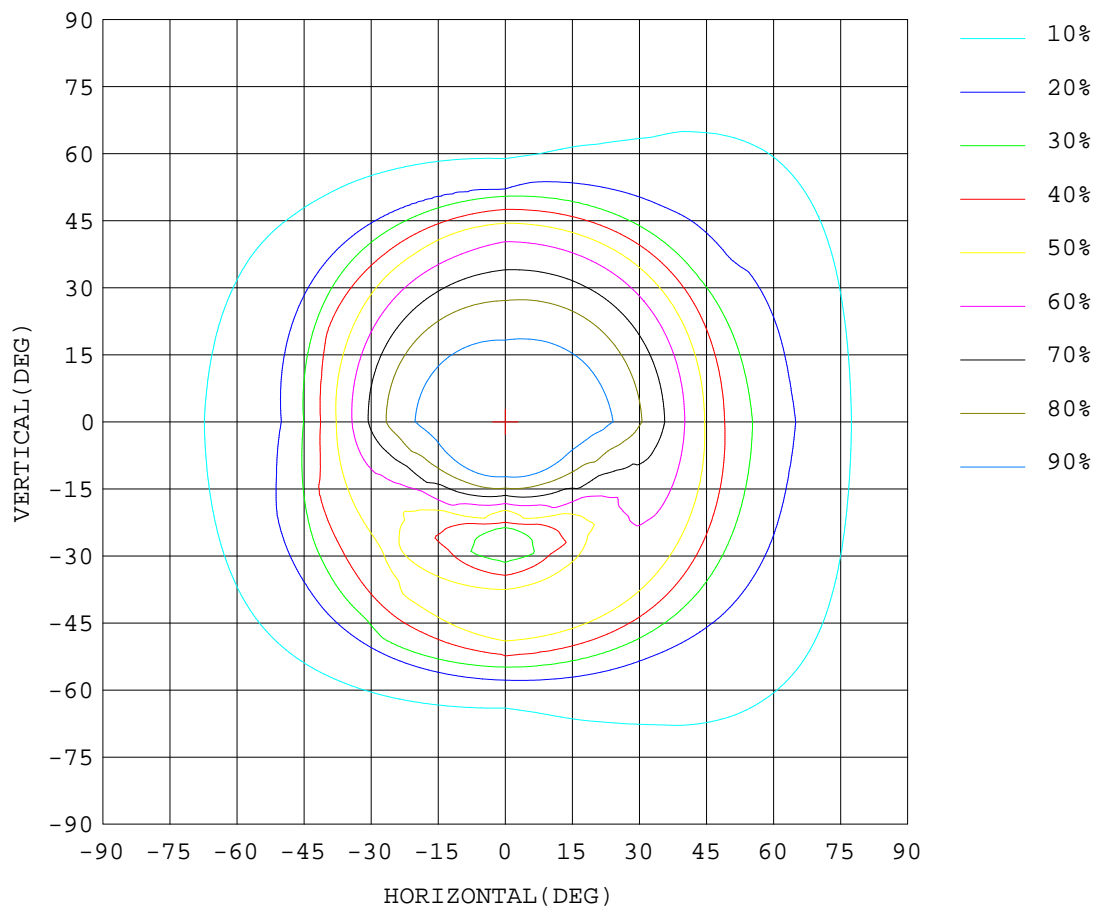
Test Set: 10.0deg/s C-Gamma (TYPE C)  
 Humidity:65.0%  
 Test Distance:1.000 m  
 Remarks:

## ISOCANDELA DIAGRAM

Report number:

MANUFACTURER:			
Address:			
NAME:		TYPE:	WEIGHT:
SPECIFICATION:	CCT(K): 0	DIMENSION:	SERIAL No.:

UNIT: cd



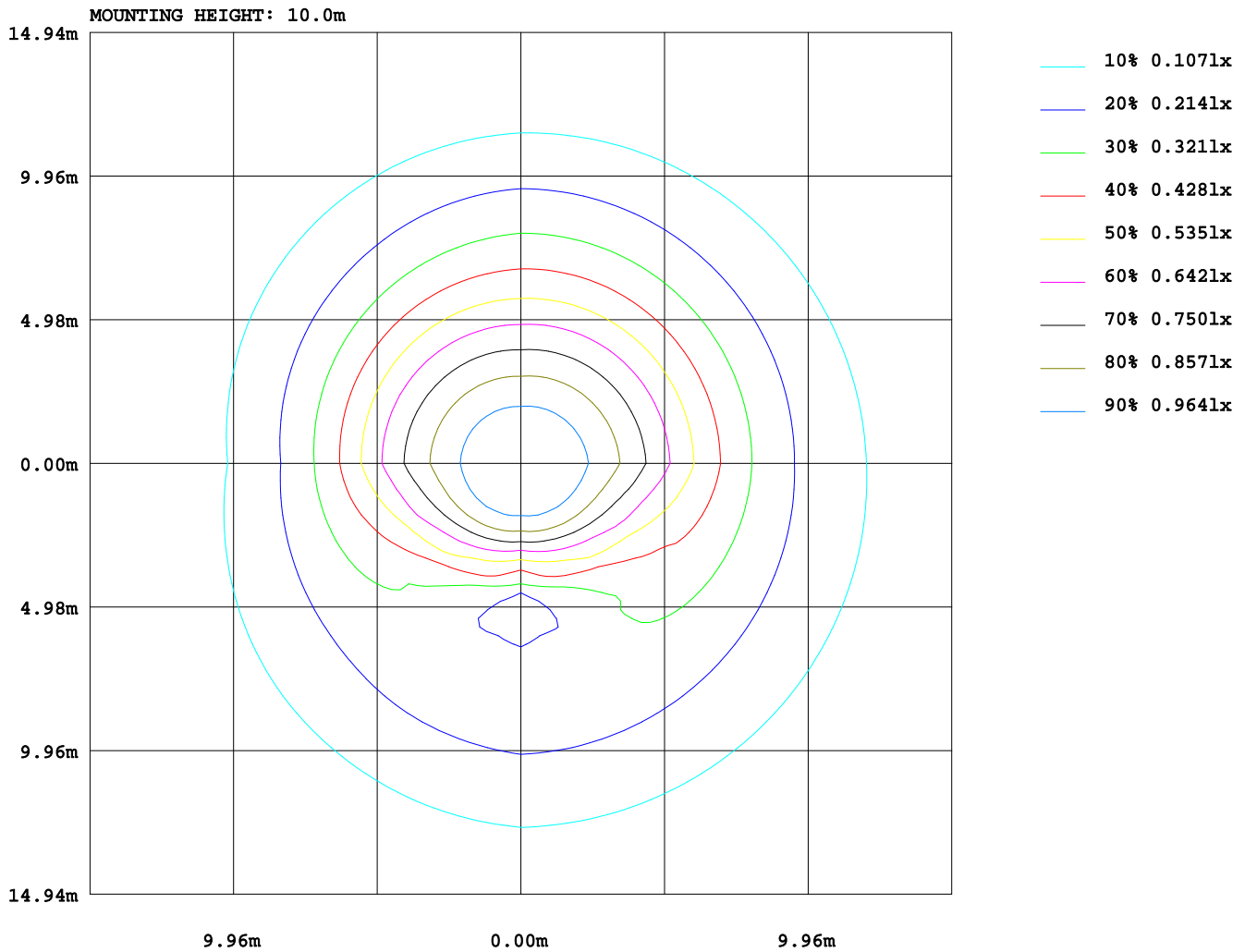
Test System:HOP00 HP880D  
Temperature:25.3DEG  
Operators:  
Test Date:07-14-2023

Test Set: 10.0deg/s C-Gamma (TYPE C)  
Humidity:65.0%  
Test Distance:1.000 m  
Remarks:

## ISOLUX DIAGRAM

Report number:

MANUFACTURER:			
Address:			
NAME:		TYPE:	WEIGHT:
SPECIFICATION:	CCT(K): 0	DIMENSION:	SERIAL No.:



Test System:HOP00 HP880D  
Temperature:25.3DEG  
Operators:  
Test Date:07-14-2023

Test Set: 10.0deg/s C-Gamma (TYPE C)  
Humidity:65.0%  
Test Distance:1.000 m  
Remarks:

# HONGPU GONIOPHOTOMETERS SYSTEM TEST REPORT

## AREA LUMINOUS FLUX

Report number:

MANUFACTURER:																			
Address:																			
NAME:										TYPE:					WEIGHT:				
SPECIFICATION:					CCT(K): 0					DIMENSION:					SERIAL No.:				

VERTICAL (DEG)	AREA FLUX DIAGRAM																		UNIT:lm				Φ t	Φ a
	90	80	70	60	50	40	30	20	10	0	10	20	30	40	50	60	70	80	90					
	0.00	0.00	0.01	0.01	0.02	0.03	0.03	0.04	0.04	0.05	0.05	0.05	0.05	0.04	0.03	0.02	0.01	0.00	0.50	0.38				
	0.00	0.01	0.02	0.03	0.06	0.08	0.11	0.12	0.13	0.14	0.16	0.17	0.15	0.12	0.09	0.05	0.02	0.00	1.46	1.16				
	0.00	0.01	0.03	0.07	0.12	0.16	0.19	0.21	0.21	0.23	0.26	0.27	0.26	0.23	0.16	0.09	0.03	0.01	2.54	1.97				
	0.00	0.01	0.05	0.12	0.19	0.26	0.35	0.45	0.54	0.57	0.54	0.47	0.39	0.31	0.23	0.13	0.05	0.01	4.67	3.83				
	0.00	0.02	0.08	0.17	0.26	0.45	0.79	1.19	1.47	1.51	1.32	0.98	0.65	0.43	0.29	0.17	0.06	0.01	9.87	8.76				
	0.00	0.03	0.10	0.20	0.38	0.82	1.41	1.88	2.16	2.20	2.02	1.63	1.09	0.62	0.36	0.20	0.08	0.01	15.2	13.8				
	0.00	0.03	0.12	0.24	0.54	1.18	1.86	2.39	2.65	2.68	2.49	2.07	1.48	0.84	0.44	0.23	0.09	0.01	19.3	17.6				
	0.00	0.04	0.14	0.28	0.68	1.42	2.21	2.75	2.98	3.00	2.82	2.38	1.73	1.02	0.51	0.26	0.10	0.01	22.3	20.3				
	0.00	0.04	0.15	0.30	0.73	1.54	2.40	2.92	3.16	3.18	2.99	2.57	1.87	1.12	0.56	0.28	0.11	0.01	23.9	21.7				
	0.00	0.04	0.15	0.31	0.74	1.48	2.21	2.79	3.15	3.17	2.87	2.38	1.82	1.13	0.57	0.28	0.11	0.01	23.2	21.0				
	0.00	0.04	0.14	0.30	0.72	1.33	1.71	2.10	2.46	2.48	2.17	1.89	1.64	1.06	0.54	0.26	0.10	0.01	18.9	16.8				
-30	0.00	0.03	0.13	0.27	0.63	1.19	1.47	1.34	1.12	1.15	1.44	1.68	1.48	0.93	0.47	0.24	0.09	0.01	13.7	11.8				
-40	0.00	0.03	0.11	0.23	0.49	0.97	1.43	1.56	1.43	1.47	1.69	1.65	1.24	0.73	0.38	0.21	0.08	0.01	13.7	12.2				
-50	0.00	0.02	0.09	0.19	0.32	0.64	1.08	1.47	1.73	1.77	1.60	1.27	0.84	0.49	0.31	0.18	0.07	0.01	12.1	10.8				
-60	0.00	0.02	0.06	0.13	0.22	0.33	0.51	0.75	0.94	0.97	0.84	0.63	0.46	0.34	0.24	0.14	0.05	0.01	6.66	5.74				
-70	0.00	0.01	0.04	0.09	0.14	0.20	0.25	0.29	0.32	0.34	0.35	0.33	0.30	0.25	0.18	0.10	0.04	0.01	3.22	2.58				
-80	0.00	0.01	0.02	0.05	0.08	0.12	0.15	0.17	0.19	0.20	0.22	0.21	0.19	0.15	0.10	0.06	0.02	0.00	1.94	1.58				
-90	0.00	0.00	0.01	0.01	0.03	0.04	0.05	0.07	0.08	0.08	0.08	0.08	0.06	0.05	0.04	0.02	0.01	0.00	0.72	0.58				
-90 -80 -70 -60 -50 -40 -30 -20 HORIZONTAL( DEG) 20 30 40 50 60 70 80 90																								
Φ t	0.03	0.40	1.44	3.00	6.36	12.2	18.2	22.5	24.7	25.2	23.9	20.7	15.7	9.86	5.48	2.91	1.13	0.16	196					
Φ a	0.00	0.00	0.00	0.00	3.81	12.2	18.2	22.5	24.7	25.2	23.9	20.7	15.7	5.62	0.00	0.00	0.00	0.00		132				

Test System:HOP00 HP880D  
 Temperature:25.3DEG  
 Operators:  
 Test Date:07-14-2023

Test Set: 10.0deg/s C-Gamma (TYPE C)  
 Humidity:65.0%  
 Test Distance:1.000 m  
 Remarks:

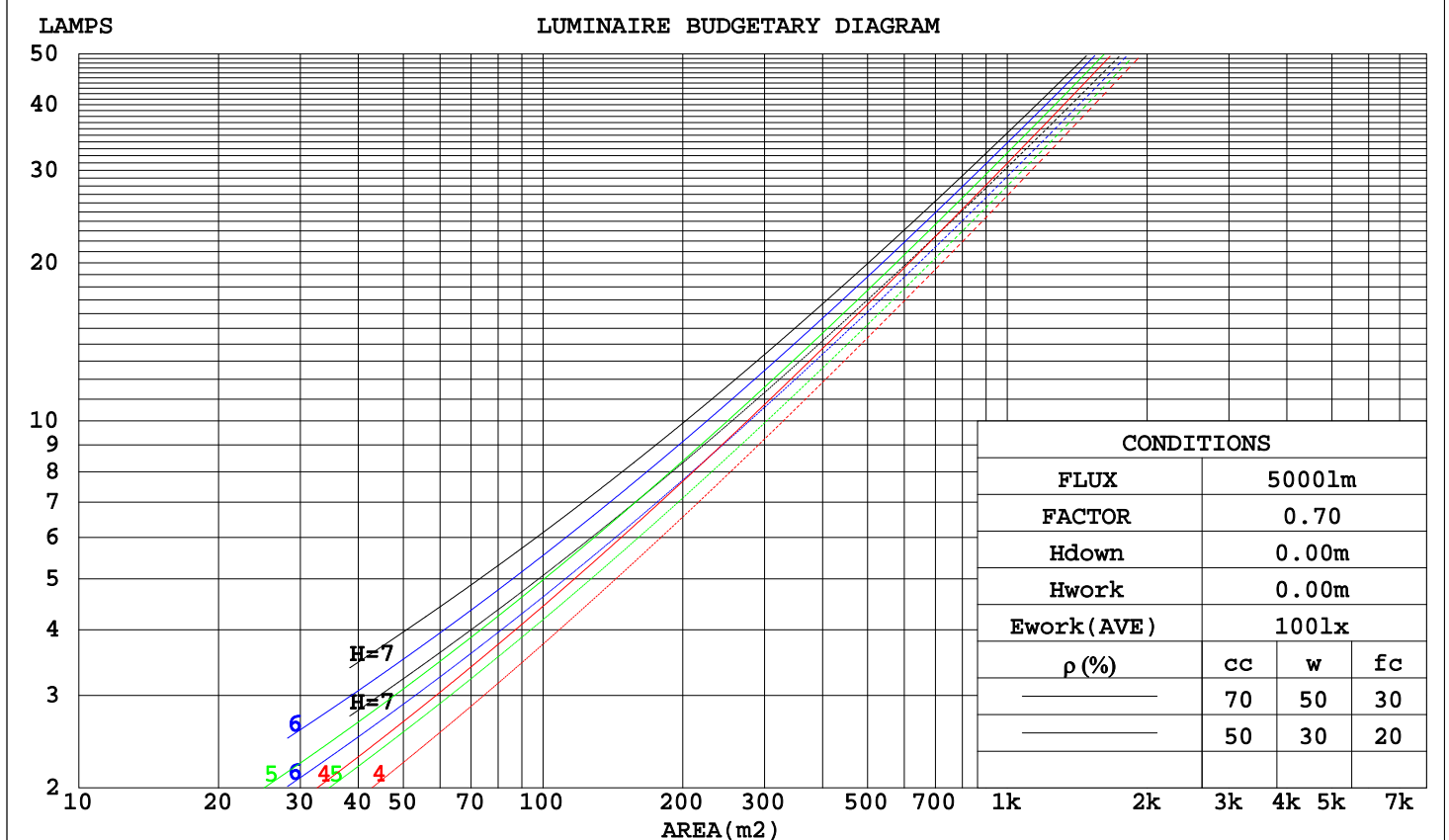


## CU AND LUMINAIRE BUDGETARY ESTIMATE DIAGRAM

Report number:

MANUFACTURER:															
Address:															
NAME:								TYPE:				WEIGHT:			
SPECIFICATION:				CCT(K): 0				DIMENSION:				SERIAL No.:			

$\rho_{cc}$	80%			70%			50%			30%			10%			0
$\rho_w$	50%	30%	10%	50%	30%	10%	50%	30%	10%	50%	30%	10%	50%	30%	10%	0
$\rho_{fc}$	20%			20%			20%			20%			20%			0
RCR	RCR:Room Cavity Ratio															



Test System:HOPPO HP880D  
 Temperature:25.3DEG  
 Operators:  
 Test Date:07-14-2023

Test Set: 10.0deg/s C-Gamma (TYPE C)  
 Humidity:65.0%  
 Test Distance:1.000 m  
 Remarks:

# HONGPU GONIOPHOTOMETERS SYSTEM TEST REPORT

## WEC AND CCEC

Report number:

MANUFACTURER:															
Address:															
NAME:								TYPE:				WEIGHT:			
SPECIFICATION:				CCT(K): 0				DIMENSION:				SERIAL No.:			

ρ <sub>cc</sub>	80%			70%			50%			30%			10%			0
ρ <sub>w</sub>	50%	30%	10%	50%	30%	10%	50%	30%	10%	50%	30%	10%	50%	30%	10%	0
ρ <sub>fc</sub>	20%			20%			20%			20%			20%			0
RCR	RCR:Room Cavity Ratio						Wall Exitance Coefficients(WEC)									
0.0																
1.0	.263	.149	.047	.255	.146	.046	.242	.139	.044	.229	.132	.042	.218	.126	.041	
2.0	.250	.137	.042	.243	.134	.041	.231	.129	.040	.220	.124	.039	.210	.119	.037	
3.0	.234	.125	.037	.228	.122	.037	.218	.118	.036	.208	.114	.035	.199	.110	.034	
4.0	.219	.114	.033	.214	.112	.033	.205	.109	.032	.196	.105	.032	.188	.102	.031	
5.0	.205	.104	.030	.200	.103	.030	.192	.100	.029	.184	.097	.029	.177	.095	.028	
6.0	.192	.096	.028	.188	.095	.027	.181	.093	.027	.174	.090	.027	.167	.088	.026	
7.0	.180	.089	.025	.177	.088	.025	.170	.086	.025	.164	.084	.024	.158	.082	.024	
8.0	.170	.083	.023	.167	.082	.023	.161	.080	.023	.155	.079	.023	.150	.077	.022	
9.0	.160	.077	.022	.157	.077	.022	.152	.075	.021	.147	.074	.021	.142	.072	.021	
10.0	.151	.073	.020	.149	.072	.020	.144	.071	.020	.140	.069	.020	.135	.068	.020	

ρ <sub>cc</sub>	80%			70%			50%			30%			10%			0
ρ <sub>w</sub>	50%	30%	10%	50%	30%	10%	50%	30%	10%	50%	30%	10%	50%	30%	10%	0
ρ <sub>fc</sub>	20%			20%			20%			20%			20%			0
RCR	RCR:Room Cavity Ratio						Ceiling Cavity Exitance Coefficients(CCEC)									
0.0	.199	.199	.199	.170	.170	.170	.116	.116	.116	.067	.067	.067	.021	.021	.021	
1.0	.185	.165	.146	.158	.141	.126	.108	.097	.087	.062	.056	.051	.020	.018	.016	
2.0	.175	.140	.111	.150	.121	.096	.103	.084	.067	.059	.049	.039	.019	.016	.013	
3.0	.166	.122	.088	.142	.105	.076	.098	.073	.053	.056	.043	.031	.018	.014	.010	
4.0	.158	.109	.071	.135	.094	.062	.093	.065	.044	.054	.038	.026	.017	.012	.008	
5.0	.150	.098	.059	.129	.085	.052	.089	.059	.036	.051	.035	.022	.017	.011	.007	
6.0	.143	.089	.051	.123	.077	.044	.085	.054	.031	.049	.032	.019	.016	.010	.006	
7.0	.137	.082	.044	.118	.071	.038	.081	.050	.027	.047	.029	.016	.015	.010	.005	
8.0	.131	.076	.039	.113	.066	.034	.078	.047	.024	.045	.027	.014	.015	.009	.005	
9.0	.125	.071	.035	.108	.062	.031	.075	.044	.022	.043	.026	.013	.014	.008	.004	
10.0	.120	.067	.032	.103	.058	.028	.072	.041	.020	.042	.024	.012	.014	.008	.004	

Test System:HOPPO HP880D  
 Temperature:25.3DEG  
 Operators:  
 Test Date:07-14-2023

Test Set: 10.0deg/s C-Gamma (TYPE C)  
 Humidity:65.0%  
 Test Distance:1.000 m  
 Remarks:

## UGR Table

Report number:

MANUFACTURER:											
Address:											
NAME:						TYPE:		WEIGHT:			
SPECIFICATION:		CCT(K): 0				DIMENSION:		SERIAL No.:			
ceiling/cavity		0.7	0.7	0.5	0.5	0.3	0.7	0.7	0.5	0.5	0.3
walls		0.5	0.3	0.5	0.3	0.3	0.5	0.3	0.5	0.3	0.3
working plane		0.2	0.2	0.2	0.2	0.2	0.2	0.2	0.2	0.2	0.2
Room dimensions		Viewed crosswise					Viewed endwise				
x = 2H y = 2H		10.8	12.2	11.1	12.4	12.6	10.3	11.7	10.6	11.9	12.1
	3H	12.1	13.3	12.4	13.6	13.8	10.7	11.9	11.0	12.1	12.4
	4H	12.8	14.0	13.1	14.2	14.5	10.9	12.1	11.3	12.4	12.6
	6H	13.3	14.4	13.6	14.7	15.0	11.3	12.3	11.6	12.6	12.9
	8H	13.5	14.5	13.8	14.8	15.1	11.4	12.5	11.8	12.8	13.1
	12H	13.6	14.6	13.9	14.9	15.2	11.5	12.5	11.9	12.8	13.1
4H	2H	11.1	12.2	11.4	12.5	12.7	10.6	11.8	10.9	12.0	12.3
	3H	12.6	13.6	12.9	13.9	14.2	11.2	12.2	11.6	12.5	12.9
	4H	13.4	14.3	13.8	14.7	15.0	11.7	12.6	12.0	12.9	13.3
	6H	14.1	14.9	14.5	15.3	15.6	12.2	13.0	12.6	13.3	13.7
	8H	14.3	15.1	14.7	15.4	15.8	12.4	13.2	12.8	13.5	13.9
	12H	14.5	15.2	14.9	15.6	16.0	12.5	13.2	13.0	13.6	14.0
8H	4H	13.6	14.3	14.0	14.7	15.1	12.0	12.8	12.4	13.2	13.6
	6H	14.4	15.0	14.9	15.4	15.9	12.7	13.3	13.2	13.8	14.2
	8H	14.7	15.3	15.2	15.7	16.2	13.0	13.6	13.5	14.0	14.5
	12H	15.0	15.5	15.5	15.9	16.4	13.2	13.7	13.7	14.2	14.7
12H	4H	13.6	14.3	14.0	14.7	15.1	12.1	12.8	12.5	13.2	13.6
	6H	14.4	15.0	14.9	15.4	15.9	12.8	13.4	13.3	13.8	14.3
	8H	14.8	15.3	15.3	15.7	16.2	13.2	13.7	13.7	14.1	14.6
Variations with the observer position at spacings:											
S = 1.0H		+ 0.3 / - 0.3					+ 0.5 / - 0.4				
1.5H		+ 0.1 / - 0.2					+ 0.4 / - 1.1				
2.0H		+ 0.6 / - 0.6					+ 1.3 / - 1.5				

CIE Pub.117 Corrected 196.4 lm Total Lamp Luminous Flux.(8log(F/F0) = -5.7)

Test System:HOPPO HP880D  
 Temperature:25.3DEG  
 Operators:  
 Test Date:07-14-2023

Test Set: 10.0deg/s C-Gamma (TYPE C)  
 Humidity:65.0%  
 Test Distance:1.000 m  
 Remarks:

## UTILIZATION FACTORS TABLE

Report number:

MANUFACTURER:										
Address:										
NAME:					TYPE:			WEIGHT:		
SPECIFICATION:			CCT(K): 0		DIMENSION:			SERIAL No.:		

REFLECTANCE										
Ceiling	0.8	0.8	0.8	0.7	0.7	0.7	0.5	0.5	0.5	0
Walls	0.7	0.5	0.3	0.7	0.5	0.3	0.7	0.5	0.3	0
Working plane	0.2	0.2	0.2	0.2	0.2	0.2	0.2	0.2	0.2	0
ROOM INDEX	UTILIZATION FACTORS(PERCENT) $k(RI) \times RCR = 5$									
$k = 0.60$	65	54	48	64	54	48	63	54	48	42
0.80	75	64	58	74	64	58	72	63	57	51
1.00	83	73	67	81	72	66	79	73	66	60
1.25	89	80	74	88	79	74	85	78	73	66
1.50	93	85	79	92	84	79	89	82	78	71
2.00	99	92	87	97	91	86	94	89	84	77
2.50	102	96	91	100	94	90	97	92	88	80
3.00	105	99	95	103	98	94	99	95	91	83
4.00	108	103	100	106	102	98	102	98	95	87
5.00	110	106	103	108	104	101	103	100	98	89
ROOM INDEX	UF(total)									Direct
According to DIN EN 13032-2 2004					Suspended			SHRNOM = 1.25		

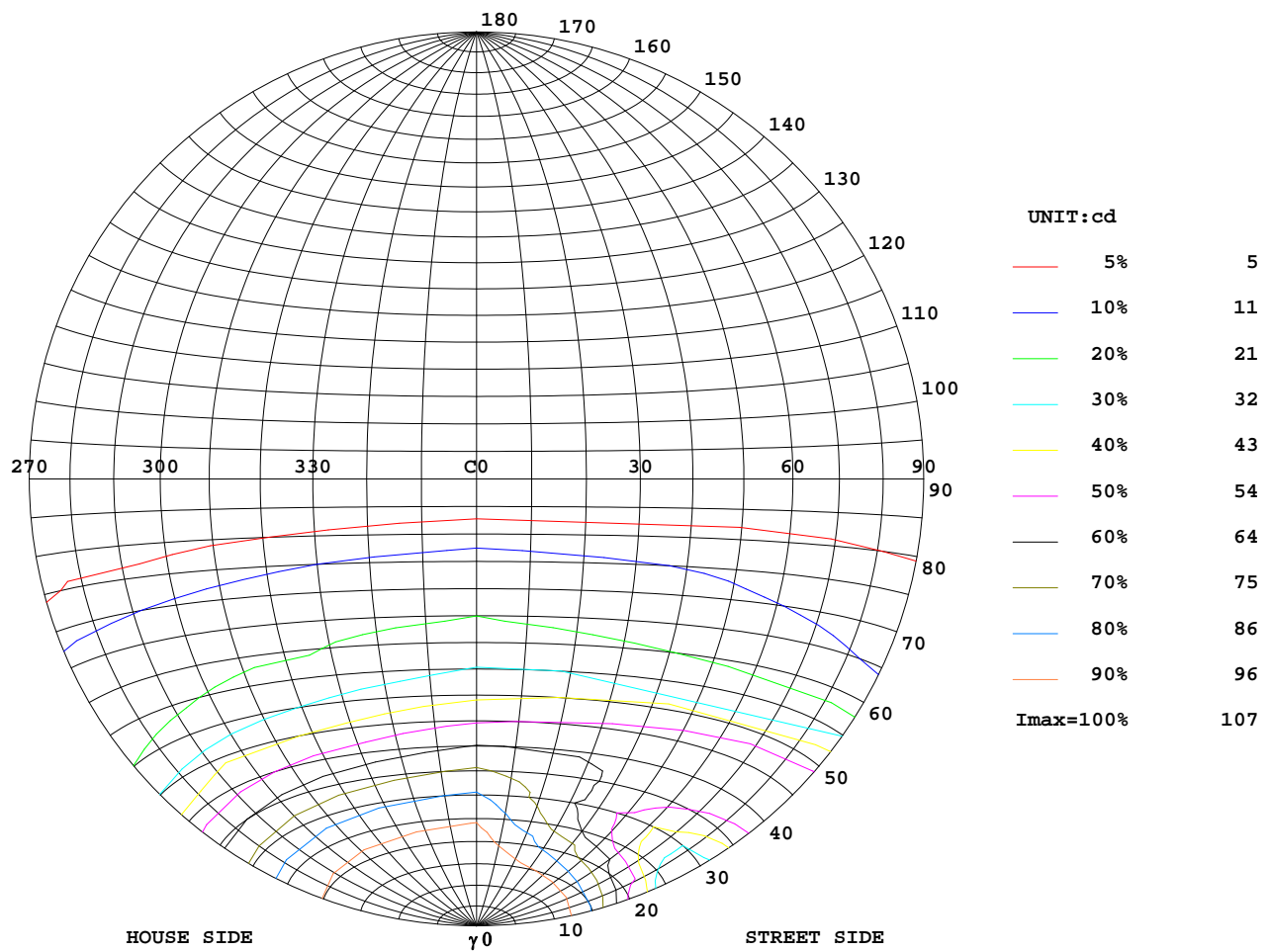
Test System:HOP00 HP880D  
 Temperature:25.3DEG  
 Operators:  
 Test Date:07-14-2023

Test Set: 10.0deg/s C-Gamma (TYPE C)  
 Humidity:65.0%  
 Test Distance:1.000 m  
 Remarks:

## ISOCANDELA DIAGRAM

Report number:

MANUFACTURER:			
Address:			
NAME:		TYPE:	WEIGHT:
SPECIFICATION:	CCT(K): 0	DIMENSION:	SERIAL No.:



Test System:HOP00 HP880D  
Temperature:25.3DEG  
Operators:  
Test Date:07-14-2023

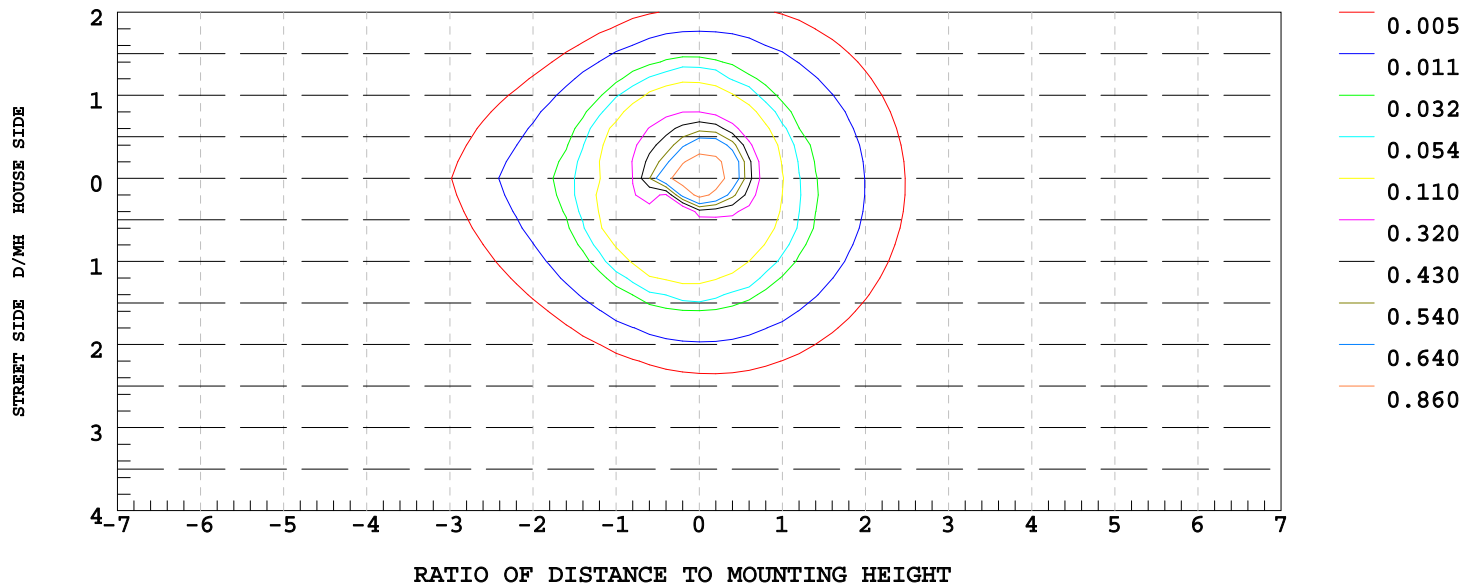
Test Set: 10.0deg/s C-Gamma (TYPE C)  
Humidity:65.0%  
Test Distance:1.000 m  
Remarks:

## ISOLUX DIAGRAM

Report number:

MANUFACTURER:			
Address:			
NAME:		TYPE:	WEIGHT:
SPECIFICATION:	CCT(K): 0	DIMENSION:	SERIAL No.:

ILLUMINANCE AT MH=10 m,Enadir = 1.07 lx



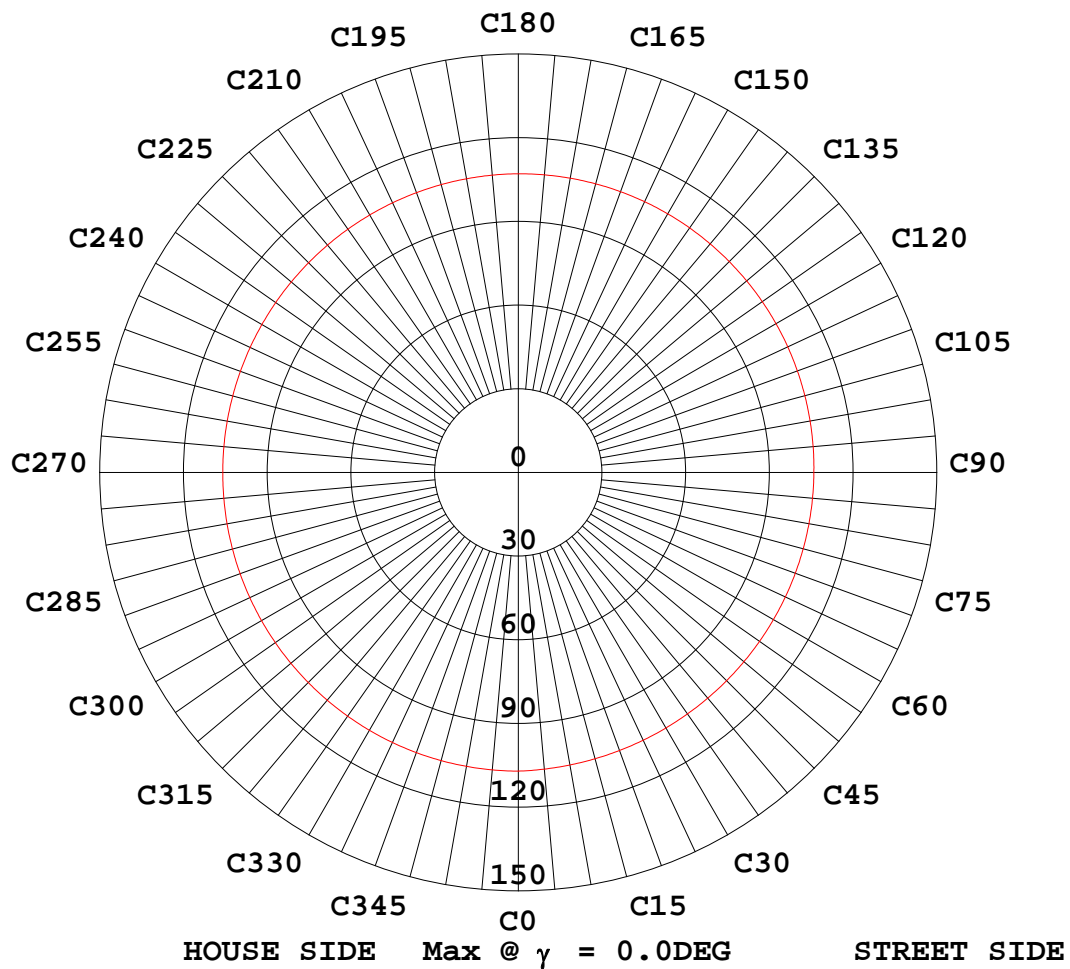
Test System:HOPPO HP880D  
Temperature:25.3DEG  
Operators:  
Test Date:07-14-2023

Test Set: 10.0deg/s C-Gamma (TYPE C)  
Humidity:65.0%  
Test Distance:1.000 m  
Remarks:

## ISOCANDELA DIAGRAM

Report number:

MANUFACTURER:			
Address:			
NAME:		TYPE:	WEIGHT:
SPECIFICATION:	CCT(K): 0	DIMENSION:	SERIAL No.:



Test System:HOP00 HP880D  
Temperature:25.3DEG  
Operators:  
Test Date:07-14-2023

Test Set: 10.0deg/s C-Gamma (TYPE C)  
Humidity:65.0%  
Test Distance:1.000 m  
Remarks:

## LUMINOUS DISTRIBUTION INTENSITY DATA

Report number:

MANUFACTURER:			
Address:			
NAME:		TYPE:	WEIGHT:
SPECIFICATION:	CCT(K): 0	DIMENSION:	SERIAL No.:

UNIT: cd

C (DEG) γ (DEG)	0	90	180	270
0.0	107	106	107	106
5.0	107	105	106	105
10.0	106	102	104	103
15.0	104	84.6	101	99.1
20.0	101	52.0	96.5	94.5
25.0	95.3	25.1	89.2	88.7
30.0	86.7	22.6	77.1	81.2
35.0	76.3	45.5	61.6	73.3
40.0	64.5	60.3	46.5	64.8
45.0	52.5	61.8	32.3	51.3
50.0	40.9	50.0	21.5	33.5
55.0	32.5	30.5	16.5	18.3
60.0	25.7	16.3	13.4	9.28
65.0	21.3	9.85	11.6	6.35
70.0	17.8	7.43	8.40	5.04
75.0	13.5	6.47	4.93	4.34
80.0	7.83	5.08	2.05	2.84
85.0	3.78	2.25	0.74	1.50
90.0	1.72	0.77	0.05	0.52
95.0	0.58	0.06	0.07	0.28
100.0	0.38	0.06	0.10	0.27
105.0	0.33	0.08	0.14	0.27
110.0	0.29	0.10	0.18	0.28
115.0	0.27	0.14	0.23	0.30
120.0	0.28	0.21	0.28	0.33
125.0	0.29	0.29	0.34	0.38
130.0	0.31	0.39	0.41	0.44
135.0	0.37	0.46	0.47	0.47
140.0	0.45	0.50	0.51	0.45
145.0	0.51	0.51	0.52	0.37
150.0	0.53	0.48	0.51	0.29
155.0	0.51	0.44	0.47	0.25
160.0	0.46	0.40	0.41	0.29
165.0	0.40	0.34	0.36	0.33
170.0	0.34	0.30	0.31	0.32
175.0	0.30	0.28	0.29	0.28
180.0	0.29	0.28	0.29	0.28

Test System:HOPPO HP880D  
Temperature:25.3DEG  
Operators:  
Test Date:07-14-2023

Test Set: 10.0deg/s C-Gamma (TYPE C)  
Humidity:65.0%  
Test Distance:1.000 m  
Remarks: