



TAP-TO-RUN SET UP INSTRUCTIONS

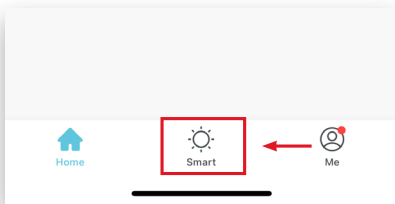
Adding Tap-to-Run Automation to the Smart Socket 3.0

Tap-to-Run Automation allows you to program several devices to turn on at the same time. You can set custom colors and adjust the brightness of each lamp. This function works well to create automations for special events, holidays, and everyday use.

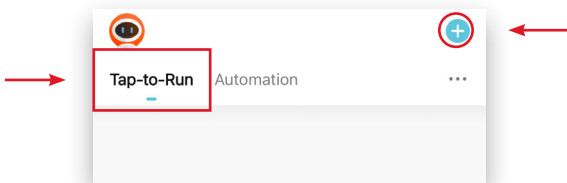
- 1. **Download Brilliance Smart** from the Apple App Store or Google Play by scanning the QR code. Register for an account if you are a first time user.



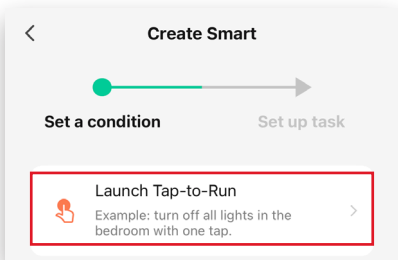
- 2. Open the Brilliance Smart app and tap the **Smart** button.



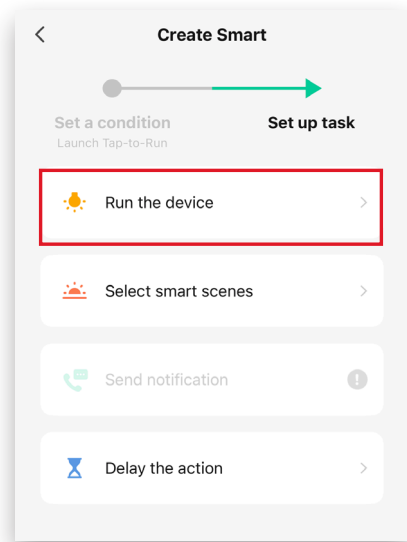
- 3. Select the **Tap-to-Run** tab and then tap the **Add** button.



- 4. Tap **Launch Tap-to-Run** to begin an automation.



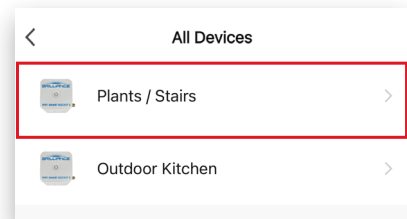
- 5. Tap **Run the device** to set up a Tap-to-Run automation task.



You can set an automation to turn the Smart Socket 3.0 on or off, and remain in that state for a specified time.

Example: Setting the Tap-to-Run automation to turn on the Smart Socket 3.0 for 5 hours, and then turn off.

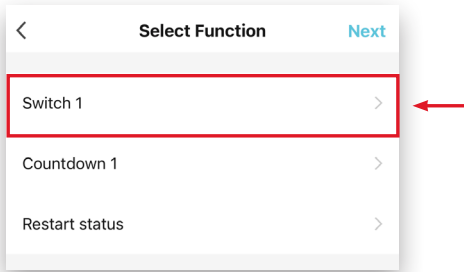
- 6. In the All Devices list, select the Smart Socket 3.0 you want to use in the automation.



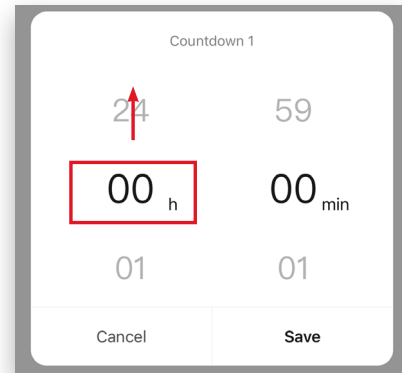
Set Up continues on the next page

Tap-to-Run Set Up - Continued

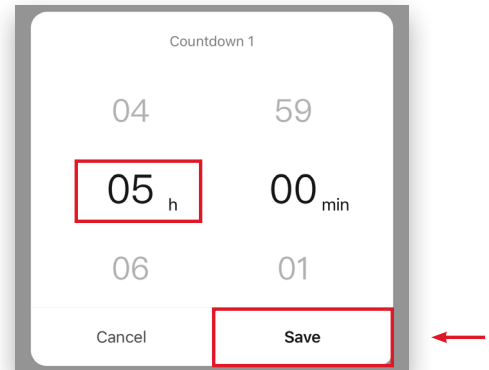
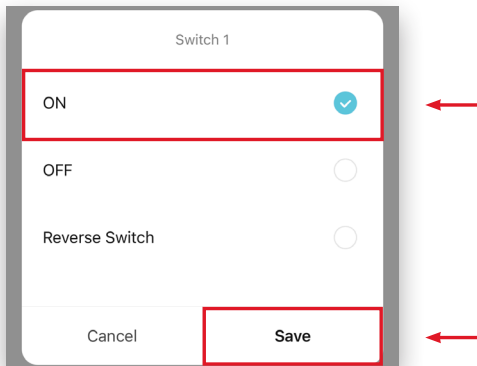
7. In the Select Function list, tap **Switch 1** to change the action.



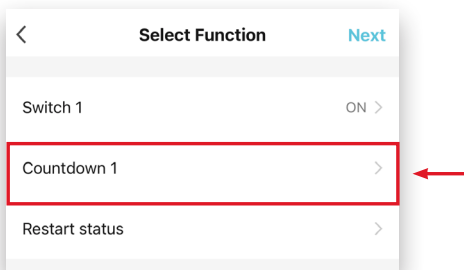
10. Tap on 00 h, scroll up to select **05 h**, and then tap **Save**.



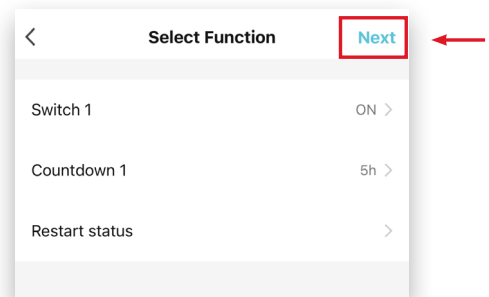
8. Tap **ON**, and then tap **SAVE** at the bottom.



9. In the Select Function list, tap **Countdown 1** to set a countdown time.



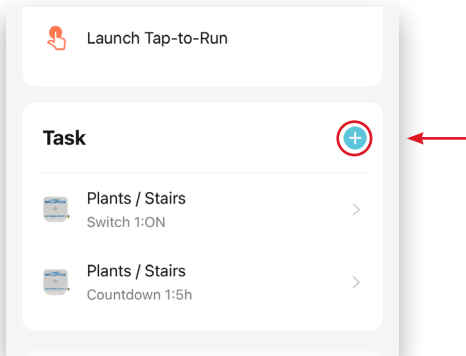
11. In the Select Function list, tap **Next**.



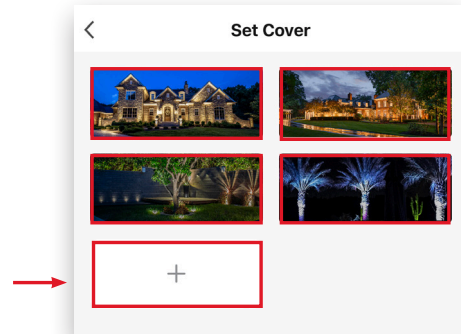
Set Up continues on the next page

Tap-to-Run Set Up - Continued

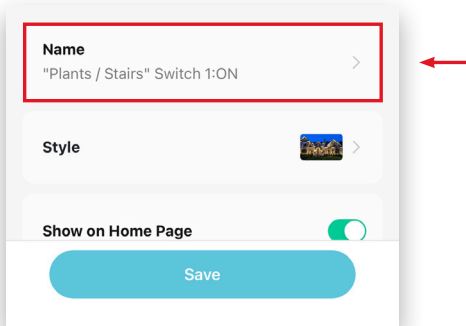
12. To add another device, tap the **Add** button in the Task section. Repeat Steps 6 through 11.



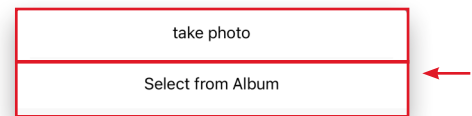
15. Select a photo from the options. To customize the photo, tap the **Add** button in the lower-left corner.



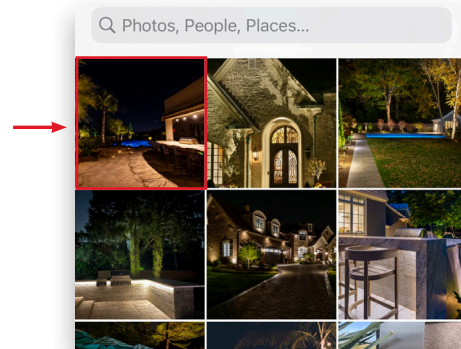
13. To customize the automation name, tap **Name**, enter a new name, and tap **Save**.



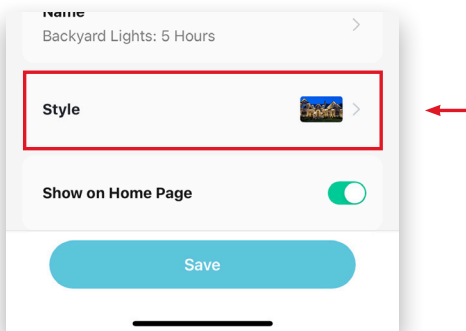
16. From the menu at the bottom of the screen, choose **Take a Photo** or **Select from Album**.



17. From the photo menu, select a cover photo.



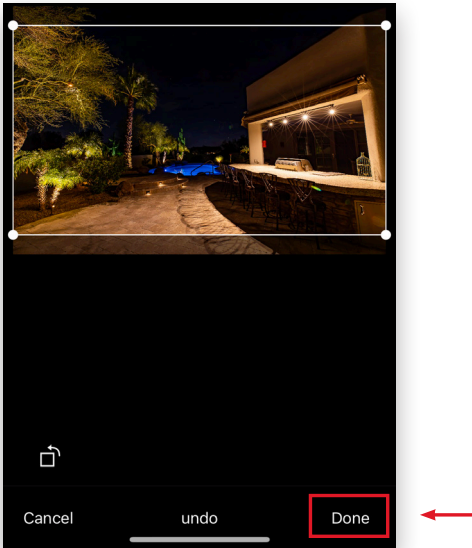
14. To customize the automation image, tap **Style**.



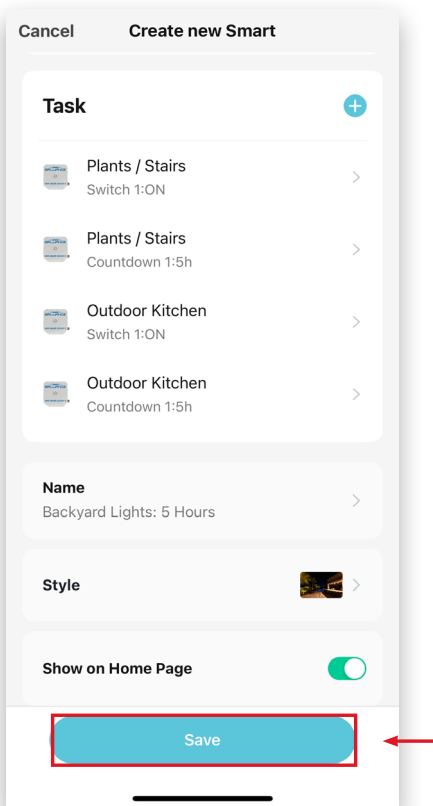
Set Up continues on the next page

Tap-to-Run Set Up - Continued

18. Move the image to fit in the bounding box, and then tap **Done** in the lower-right corner.



19. Tap **Save** at the bottom of the screen.

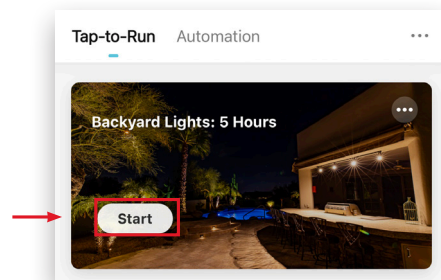


Example complete.

20. To start the Tap-to-Run automation, tap the **Smart** button at the bottom of the screen.



21. In the Tap-to-Run menu, find the automation you want to run and tap the **Start** button.



22. The app displays all of the included devices and the type of automation. Tap **OK** to start.

