

# ACCESSORIES



## CHAMELEON PROGRAMMING PUCK

This handy tool helps with the set-up of any Chameleon series lamp, using any 12-volt AC or DC power source. Battery pack and batteries included.



PROGRAMMING-PUCK

## MR11/MR8 RING ADAPTERS

Adapters for MR11 and MR8 lamps to fit inside MR16 sized fixtures. Includes both MR11 and MR8 adapter rings.

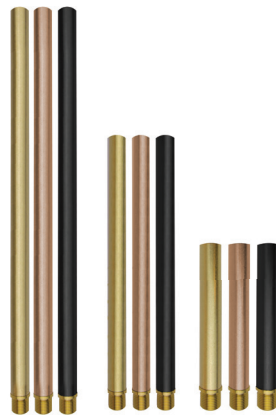
### MR8-MR11-ADAPTER-RING



shown: MR11 Adapter

## RISERS

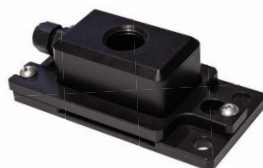
Add a 6", 12", or 18" riser to elevate fixtures above obstacles such as foliage.



RISER-6-F  
RISER-12-F  
RISER-18-F

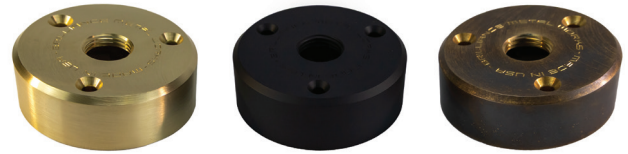
## DIRECTIONAL DOWNLIGHT TREE MOUNT

This tree mount allows for the Arches fixture to be mounted by screws or a fastening belt around any post or tree. Screws and wrench included.



TREE-MOUNT

## DECK MOUNT



The Brilliance Metal Works deck mount is made from solid round aluminum or brass stock. It is machined through a CNC

computerized process making it a virtually flawless design. Three mounting holes allow the canopy to be installed evenly on any hard-flat surface. A cable relief slot is located on the bottom side of the mount. Designed with a 1/2" NPT female thread and accepts all Brilliance Metal Works stem and knuckled fixtures.

DECK-MOUNT-AL-BK  
DECK-MOUNT-BK  
DECK-MOUNT-BR  
DECK-MOUNT-WB

## 90-DEGREE ADAPTER

Add the 90-Degree Adapter to one of our directional fixtures (such as the Denali or Acadia) to create a versatile, one-of-a-kind lighting solution. It's available in one-, two-, and three-way mounting points. The kit includes a 90-Degree Adapter, an 18" stem, two lock nuts, and a wrench. Fixture sold separately.



- \*Special Order **90-1-H-F\*** (one mounting point)
- \*Special Order **90-2-H-F\*** (two mounting points)
- \*Special Order **90-3-H-F\*** (three mounting points)

F=Finish

H=Height F=Finish

# ACCESSORIES

## Adjustable Riser 14" - 25" and 8" - 13"

The adjustable extension risers come in black or bronze and are available in two sizes, small and large. Each riser has a male half-inch NPT thread at the bottom and a female half-inch NPT thread at the top.

The small version adjusts from 8 inches up to 12 1/2 inches, while the large starts at 20 inches and extends up to 36 inches. should be Small (8" - 13") or Medium (14" - 24"). A locking collar lets you set either riser to the exact height you need. These can be combined with the tee fitting and 90° fitting to create a double-headed path light.



BD-A-RISER-M-BK  
BD-A-RISER-M-BR



BD-A-RISER-S-BK  
BD-A-RISER-S-BZ

## Black Diamond Deck Mount

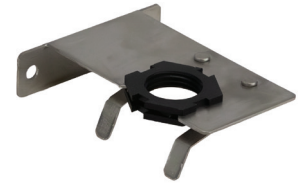
The deck mount is a flange with a female half-inch NPT thread and three holes for bolt or screw mounting into a surface. Fixtures with a half-inch NPT thread can be installed by threading them into the flange, with the wiring exiting from either the back or the side. It's designed for both deck and wall-mount applications and is available in black or bronze.



BD-DECK-MOUNT-BK  
BD-DECK-MOUNT-BZ

## Gutter Mount

The gutter mount is made of stainless-steel with a black locknut that releases from the mount so a fixture can be attached, then snaps back into place. It comes with stainless-steel screws for fastening it securely to the gutter.



VB-GUTTER-MOUNT-BK

## 90° L Sweep Adapter

The 90° fitting comes in both black and bronze and features a male half-inch NPT thread on one side and a female half-inch NPT thread with an Allen screw locking mechanism on the other to secure a fixture.



VB-90-SWEEP-BK  
VB-90-SWEEP-BZ

It can be paired with the deck mount to create a sconce, and when used alongside two 90° fittings, a tee fitting, extension risers, and directional downlights, it can form a double-headed path light.

## Tee Adapter

The tee fitting comes in black or bronze and features a male half-inch NPT thread in the center, with half-inch NPT female threads on both sides, each equipped with an Allen screw locking mechanism.



VB-S-TEE-BK  
VB-S-TEE-BZ

It's useful when two fixtures are needed to create an up-and-down lighting effect, and it can also be paired with the deck mount and the Versa Beam bubble rod to create a sconce.