

# VERSA BEAM

## Modular Integrated Light



Pre-assembled in the Configuration of Your Choice

3W, 180 Lumen Output, 8-15 VAC, 90 CRI, IP65

Available in Brass, Black Brass, Nickel and Weathered Brass

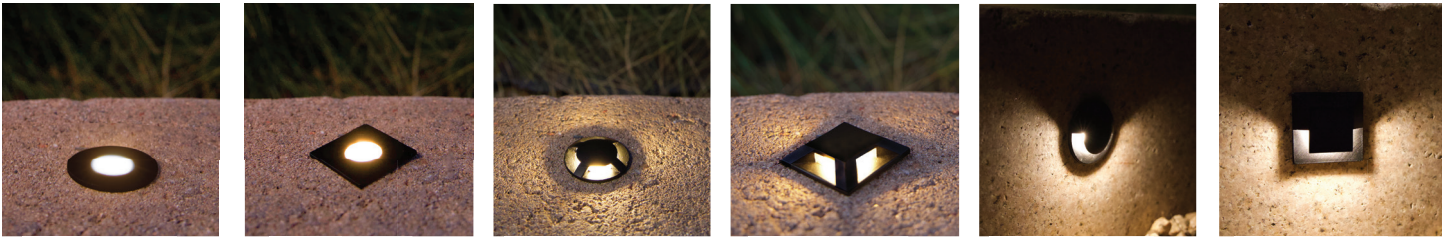
Available in 2700K or 3000K

12' Lead of 18 Gauge Direct Burial Wire

Use for Areas with Elevation Changes, Hardscape, Hanging, or Overall Landscape Lighting

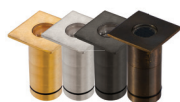
Dimmable with Most Magnetic Transformers

ETL Certified for UL 1838 and CSA C22.2 Standards



**VB-02**  
Round Flange

*Includes Round Flange,  
Light Engine,  
Optics (15°, 30°, 60°),  
Honeycomb Louver*



**VB-03**  
Square Flange

*Includes Square Flange,  
Light Engine, Optics (15°, 30°, 60°),  
Honeycomb Louver*



**VB-07**  
Round 4 Window

*Includes Round 4 Window,  
Light Engine*



**VB-08**  
Square 4 Window

*Includes Square 4 Window,  
Light Engine*



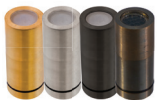
**VB-09**  
Round Eyebrow

*Includes Round Eyebrow,  
Light Engine*



**VB-10**  
Square Eyebrow

*Includes Square Eyebrow,  
Light Engine*



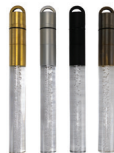
**VB-01**  
Cap

*Includes Cap, Light Engine,  
Optics (15°, 30°, 60°),  
Honeycomb Louver, Bamboo/  
Polypropylene Mounting Stake*



**VB-11**  
Knuckle, Shield, Cap

*Includes Knuckle, Shield, Cap,  
Light Engine, Optics (15°, 30°, 60°),  
Honeycomb Louver, Bamboo/  
Polypropylene Mounting Stake*



**VB-04**  
6" Bubble Rod

*Includes 6" Acrylic Bubble Rod,  
Light Engine, Hanging Loop,  
Bamboo/Polypropylene  
Mounting Stake*



**VB-05**  
12" Bubble Rod

*Includes 12" Acrylic Bubble Rod,  
Light Engine, Hanging Loop,  
Bamboo/Polypropylene  
Mounting Stake*



**VB-06**  
Perforated Shield

*Includes Perforated Shield,  
Light Engine, Hanging Loop*

For more information on the Versa Beam, visit: [brillianceled.com/versabeam](http://brillianceled.com/versabeam)

Brilliance | [brillianceled.com](http://brillianceled.com) | 800.867.2108

Follow us on social media: [brilliance.led](https://www.instagram.com/brilliance.led) Brilliance LED, LLC

